

04S[®]

Special Cameras



Overhead Camera Rig for Basketball Backstops

rim eYe
ABOVE THE RIM SYSTEM



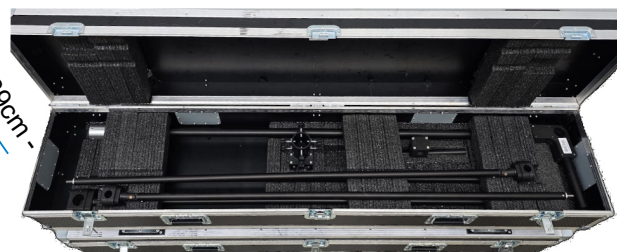
Rim eYe - above the rim system

Rim eYe is a specialized overhead camera rig designed for installation above basketball backboards, delivering dynamic top-down footage ideal for broadcast, analysis, and immersive content creation.

This system is engineered to mount securely on the backstop structure, capturing unique aerial perspectives of gameplay. It is optimized for indoor basketball courts and integrates seamlessly with existing broadcast workflows.



Robust transportation flightcase



Dim: 187x39x39 Weight: 40Kg /88.18lbs

omnicam4sky.tv

Estúdios MEDIAPRO Portugal · Asseiceira Grande · 2665-618 Venda do Pinheiro · Portugal
+351 210 180 810 · info@omnicam.pt

/omnicam4sky

@omnicam4sky

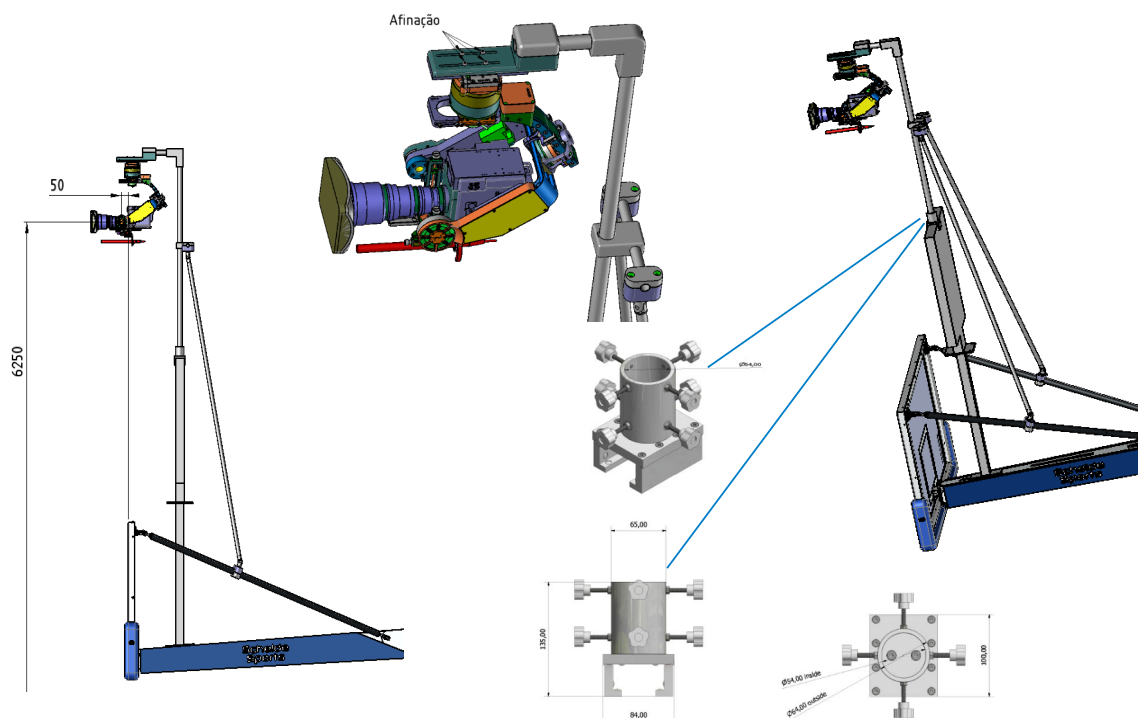
Overhead Camera Rig for Basketball Backstops

System Components & Weight Breakdown

Sony P31 Box Camera	2.4 Kg (optinal)
Canon J14 Lens	2.6 Kg (optional)
Gimbal Unit	6.0 Kg
Support System Rig	9.0 Kg
Total Rig Weight	20.0 Kg
FlightCase + Rig	40.0 Kg

Installation & Daily Operation

- **Setup Requirements:** Two-person operation is recommended with a 4.5m A-frame ladder, easily accessible court-side.
- **Daily Checks:** The backstop must be lowered each day. A robotics technician must verify that all mounts and fixings are fully secured before use.



Note: The illustration uses a specific support module for official "Swiss Timing" equipment. Compatibility with the support system may necessitate purchasing a specific (additional) module.